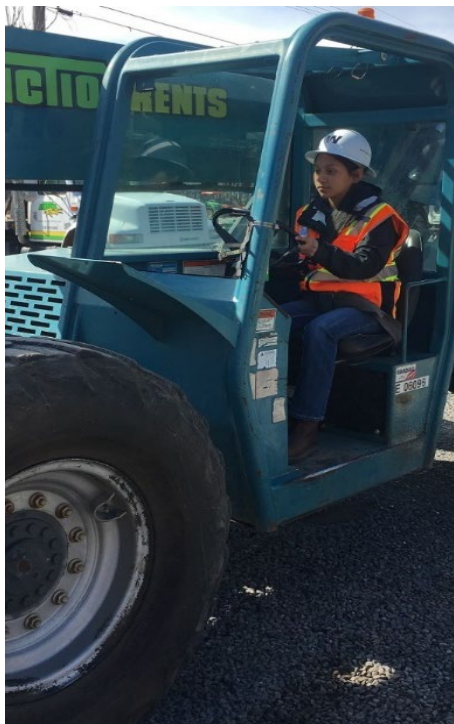




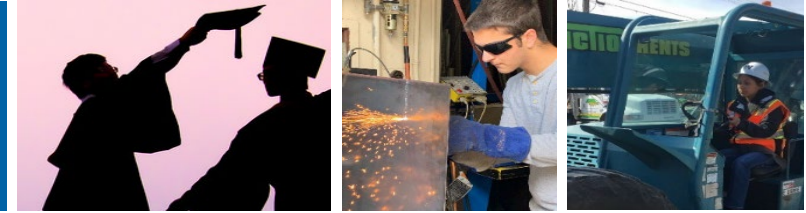
CAREER TECHNICAL
EDUCATION
FOUNDATION



2023-2024 Partnership Funding Opportunity



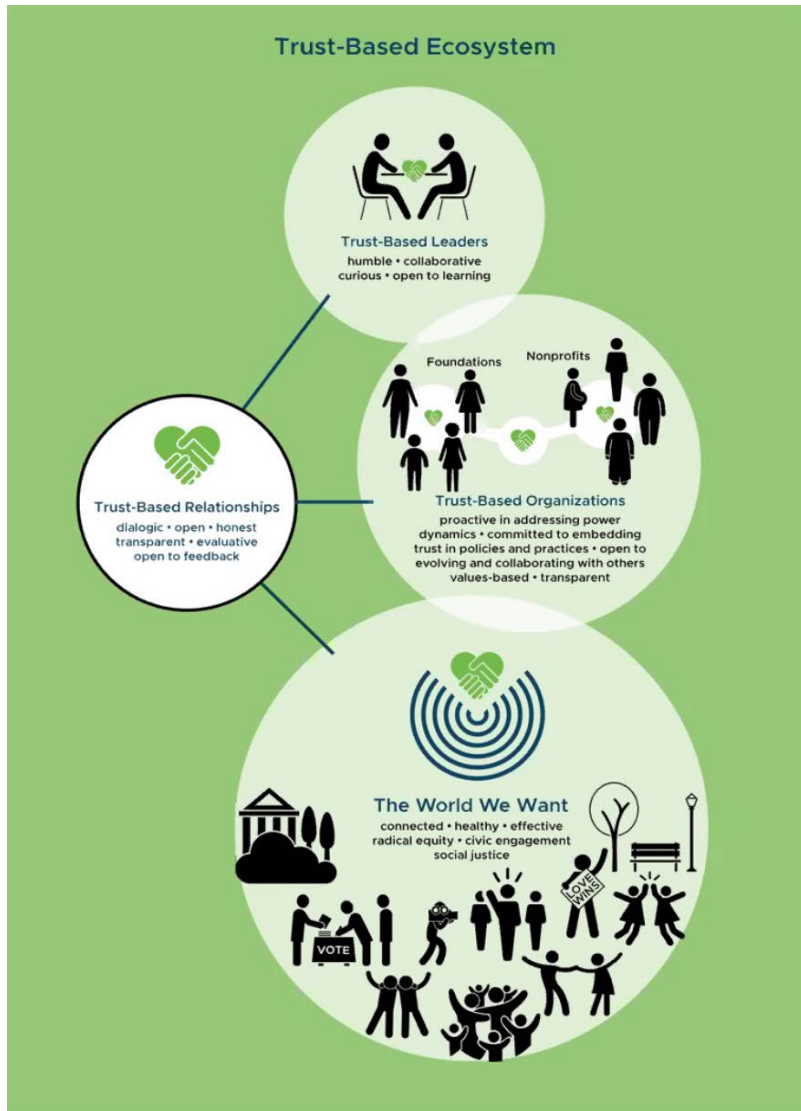
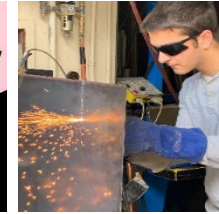
Agenda



- Welcome & Introductions
- Our Approach to Funding
- Funding Eligibility
- Timeline
- How to Apply
- Program/Project Examples
- How We Evaluate & Partner
- Q&A

Our Approach to Funding

Trust-based philanthropy model



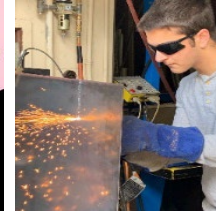
A Values-Based Approach

- Lead with Trust
- Center Relationships
- Collaborate with Humility & Curiosity
- Redistribute Power
- Work for Systemic Equity



Eligibility for Funding

Who and what we may fund



- **Funding Overview**

- Recommended funding requests of \$5,000–\$25,000
- Program/project implementation timeframe: 2023–2024 school year
- Total funds available = TBD

- **Who Should Apply**

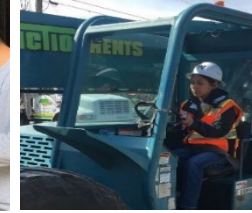
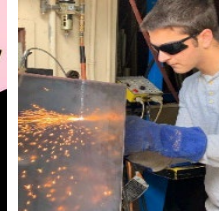
- Public schools/districts serving Sonoma County students in grades 6–12
- Private or charter schools serving Sonoma County student populations considered high-risk, underserved or under-resourced, in grades 6–12

- **Minimum requirements to be considered for funding**

- Submit a Statement of Interest form by January 11 (*earlier preferred!*)
- Participate in a mandatory 45-minute conversation with CTE Foundation staff & Program Committee

Timeline

What is due when? When will we know if we're funded?



November 7, 2022

Statement of Interest (SOI) period opened

November 30, 2022

In-person partnership workshop

December 1, 2022

Virtual partnership workshop

December 8, 2022 - January 19, 2023

Q&A meetings with CTE Foundation (mandatory)

January 11, 2023

Final Deadline for Statements of Interest

February 17, 2023

Awards Announced

March/April 2023

Contract Negotiations/Finalization

How to Apply

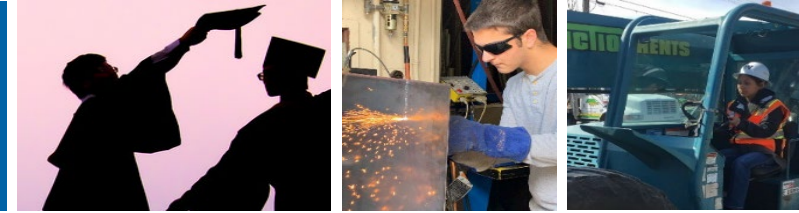
Nuts & Bolts



- Foundant Portal
 - A quick look: <https://www.grantinterface.com/sl/BNJcwV>
- Statement of Interest
 - Information requested
 - Ways to share
- Mandatory (Zoom) meeting
- Re-submission opportunity

How to Apply

Nuts & Bolts



- **Foundant Portal**

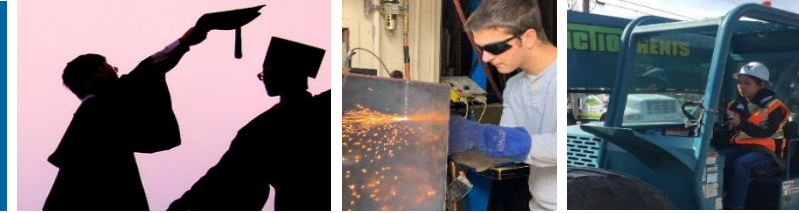
- A quick look: <https://www.grantinterface.com/sl/BNJcwV>

- **Statement of Interest**

- Information requested
 - Ways to share

- **Mandatory (Zoom) meeting**

- **Re-submission opportunity**



Logon Page

Email Address*

Password*

[Log On](#) [Create New Account](#)

[Forgot your Password?](#)

Welcome to the CTE Foundation Sonoma County's Online Portal.

New Users: Please click on "Create New Account" to complete the registration process and create your logon credentials.

Existing Users: Please enter your credentials and log in. If you forgot your password, please use the "Forgot your Password?" link to the left to reset your password.

For questions, please contact our office at admin@ctesonomacounty.org.

Create New Account

If you already have an Account, click the 'Cancel Account Creation' button to go to the Logon page

Using the browser's back button will delete your registration information.

This registration process has multiple steps you must complete before you can apply.

Fields with an asterisk (*) are required.

Organization Information

District/School or Organization*

If you are registering on behalf of a school, please write your district name first, then the school name, separated by a forward slash. Ex: Santa Rosa City Schools/Piner High School. If you are registering on behalf of a district, just write the district name.

EIN / Tax ID (##-#####)

Web Site

Telephone Number (###-###-#### x###)*

Organization Email

Address 1*

Where grant contract, agreements, and payments will be mailed.

Address 2

City*

State*

Postal Code*

[Next >](#)

User Information

Executive Officer Question

Additional Executive Officer Information

Password



Organization Information

User Information

Executive Officer Question

Are you the Organization's Executive Officer?*

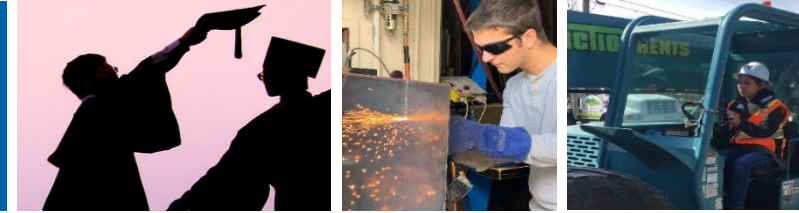
Yes

No

[< Previous](#) [Next >](#)

Additional Executive Officer Information

Password



Google Calendar - August 2018
https://calendar.google.com/calendar/r/month

CAREER TECHNICAL EDUCATION FOUNDATION

Search Tools Communications Reporting

Role (Administrator)

Apply

Enter Access Code Enter Code

If you have been provided with an Access Code, you may enter it in the box at the top of the page.

Quick Search

Partnership Funding Opportunity 2023-2024 Accepting Submissions from 11/08/2022 to 08/31/2023 [Apply](#)

CTE Foundation is seeking proposals to support career-connected education opportunities that ensure students are engaged and feel more ready for their future for the 2023-2024 school year and beyond.

Schools/school districts are invited to submit a **Preliminary Statement of Interest** to share with CTE Foundation what funding supports are needed to support students and meet their strategic vision around career technical education, work-based learning and/or career-connected learning for students.

Ideally, funds will help fill a gap or increase the delivery of programs/services that are not available through other funding sources such as Career Technical Education Incentive Grant (CTEIG), K12 Strong Workforce funds or the California Golden State Pathways Program.

Preview Send to GrantHub

Sonoma Corps Student Survey Fall 2022 Accepting Submissions from 10/02/2022 to 07/01/2023 [Apply](#)

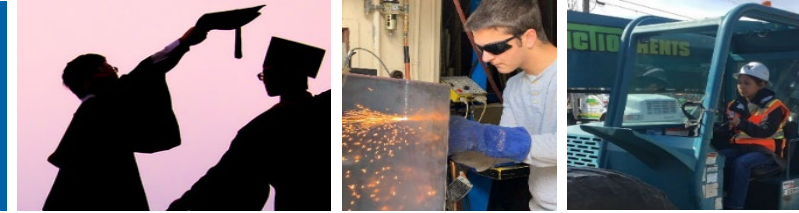
This is a mandatory Student Assessment Survey for all Sonoma Corps participants. The survey will provide CTE Foundation and your Sonoma Corps teacher an opportunity to better understand your skills, interests and college and career goals so that they can better serve you throughout your Sonoma Corps experience.

Preview Send to GrantHub



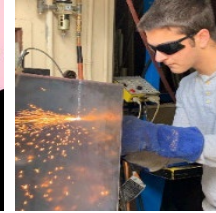
How to Apply

Nuts & Bolts



- Foundant Portal
 - A quick look: <https://www.grantinterface.com/sl/BNJcwV>
- **Statement of Interest**
 - Information requested
 - Ways to share
 - Written statements
 - Links to video or audio files
- Mandatory (Zoom) meeting
- Re-submission opportunity

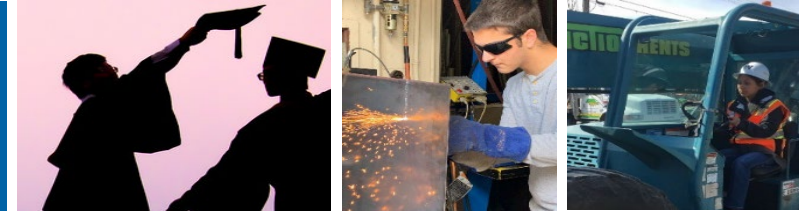
Statement of Interest



- Proposal Title
- What is the student need that this project/program addresses?
- Proposed solution
- How does your proposed program support your long-term strategy?
- How is the project/program proposed linked to your school or district's long-term strategy to provide high-quality work-based learning opportunities?
 - How is your program linked to CTE pathways/pathway expansion?
 - How does your program provide opportunities for students to earn early college credit?
- Requested grant amount
- Is there anything else that you would like to share with us about your proposed project?
- Is there anything about this form or process so far that you feel could be improved?
- Certification
 - Please certify you have authorization from site and district leadership to submit the funding proposal

How to Apply

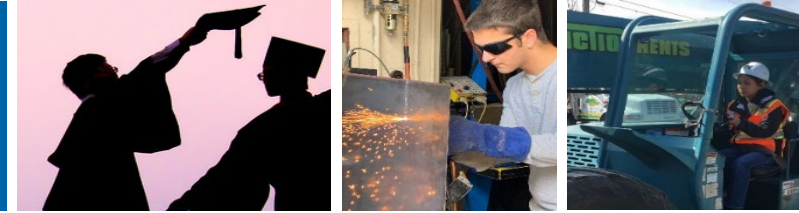
Nuts & Bolts



- Foundant Portal
 - A quick look: <https://www.grantinterface.com/sl/BNJcwV>
- Statement of Interest
 - Information requested
 - Ways to share
- **Mandatory (Zoom) meeting**
 - Upon submission of the Statement of Interest Form, an invitation to a mandatory 45-minute (Zoom) meeting with CTE Foundation will be sent to the submitter. This meeting is essential to the funding process and our effort to build a relationship with the organizations we fund.
- Re-submission opportunity

How to Apply

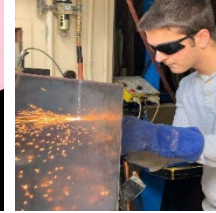
Nuts & Bolts



- Foundant Portal
 - A quick look: <https://www.grantinterface.com/sl/BNJcwV>
- Statement of Interest
 - Information requested
 - Ways to share
- Mandatory (Zoom) meeting
- **Re-submission opportunity**
 - Revise your Statement of Interest, if applicable, to ensure clarity for final consideration of funding.

How We Evaluate & Partner

Evaluation of your statement of interest



- **Student Need**

- Is the student need clearly articulated? Do you have data that helps describe the need?

- **Proposed Solution**

- Is the proposed solution clearly addressing the need(s) identified?

- **Alignment with Strategy**

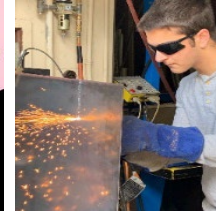
- Is your program linked to your school or district's long-term strategy to provide high quality work-based learning opportunities?
- Is your program linked to CTE pathways/pathway expansion?
- Does your program provide opportunities for students to earn early college credit?

- **Stakeholder Voice**

- How does the program respond to student or educator needs as expressed through feedback tools such as YouthTruth?
- Is this feedback/voice representative of your student population in gender, ethnicity, race, socioeconomic status, language and/or other identities?

How We Evaluate & Partner

Evaluation of your statement of interest



- Equity

- How are you providing opportunities for educators, students or groups who are systematically burdened by inequities (low-income households, students of color or Indigenous students)?

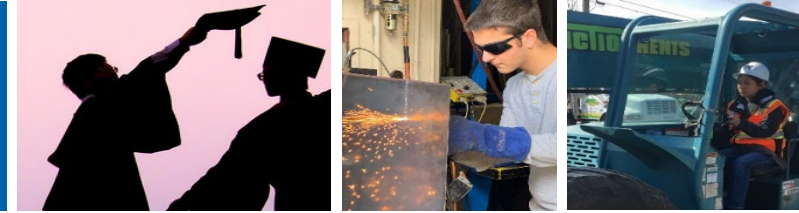
- Portrait of a Graduate/Graduate Profile

- How does the program help the school take steps in actualizing their graduate profile (or the County Portrait of a Graduate) for students or educators?

Important: *Not all of these elements need to be addressed but if your program does address them, we strongly encourage you to share with us how/why*

How We Evaluate & Partner

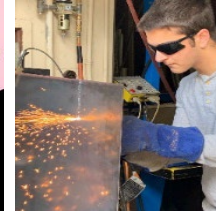
Sharing impact



- Student Surveys
- Program Reports
- Program Visits
- Stories (anecdotes), photos & video

Program/Project Examples

What schools are talking about



- **Work-Based Learning**

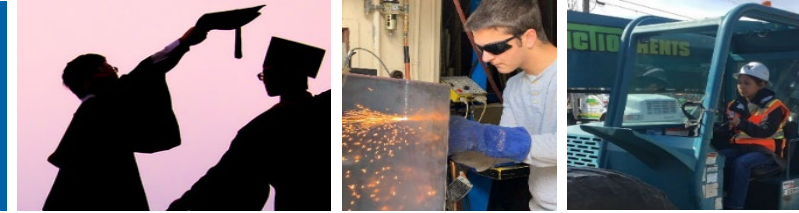
- Staff time to modify curriculum so that it incorporates work-based learning opportunities and activities (in CTE or general education courses)
- Coaching or professional development to support teachers in providing quality work-based learning
- Program supports such as transportation, supplies, software applications or curriculum fees to enhance work-based learning curriculum or systems

- **Course/Section Support**

- Course sections that provide a “wheel model” or CTE pathway exploration for middle schoolers or first- or second-year high school students to explore/learn more about CTE pathways within the school (could also be a summer course for incoming freshman or sophomores)
- Course sections that support CTE pathway completion (for example if a capstone course is needed to fulfill the 3-course CTE pathway)
- Course sections at middle schools that support building out CTE exploration that leads into /connects with local high school(s)
- Course sections in CTE that provide early college credit at a local junior/community college

Program/Project Examples

What schools are talking about



- **Planning Grants** – Planning time for teachers, counselors or administrative staff to:
 - Develop plan/strategy to apply for funding through the Golden State Pathways opportunity
 - Explore bringing a Sonoma Corps program/course to the campus
 - Explore 7th period options and/or support in modifying the master schedule to support CTE pathway expansion or more quality WBL (such as internships)
 - Develop stronger bridges with the feeder middle/junior high schools to have more robust CTE opportunities that build through a young person’s school experience
 - Support middle schools in adopting a graduate profile that is tied to their high school
 - Develop stronger/ties relationships with local junior/community colleges to expand the number of early college credit opportunities in CTE at the high school site
- **Supply Grants**
 - For teachers to purchase supplies/equipment to enhance their CTE courses

These are just examples! We encourage you to innovate and find creative ways to have a positive impact on your students, staff, school and district

Q&A

Your chance to ask questions!



- What questions do you have?
- Extra time? Get registered and dive into Foundant!